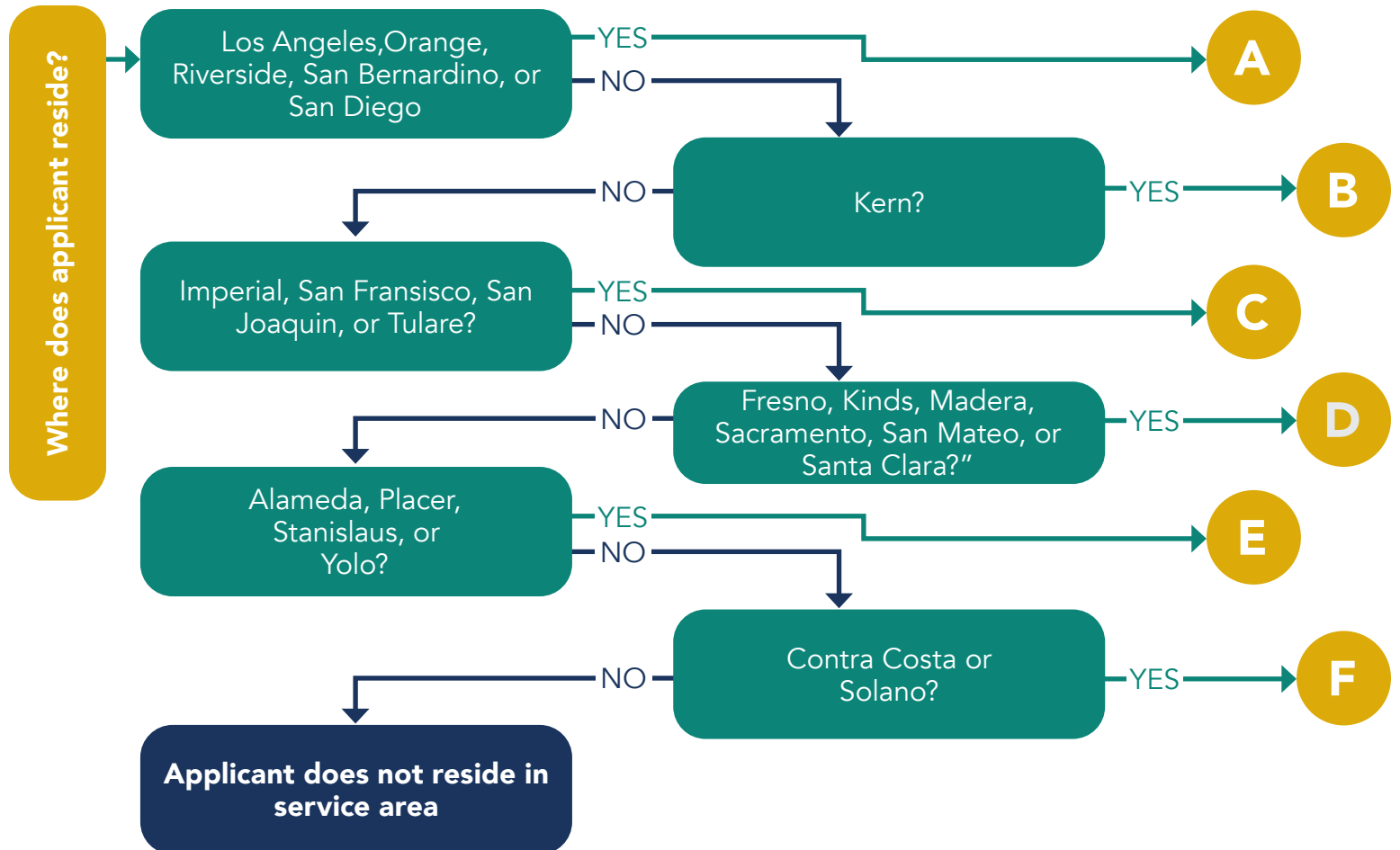


2024 PLAN FLOW CHART

brand new day

HEALTHCARE YOU CAN FEEL GOOD ABOUT



To qualify for C SNP programs, BND must verify chronic diagnosis within 30 days of enrollment from a qualified medical professional

If a person with Medicare, Full Medi-Cal and/or LIS (Level 1-3) joins BND plan that has a premium, their LIS will pay the member's Part D premium and Medi-Cal will pay the medical copayments, certain dental services and supplemental drug costs

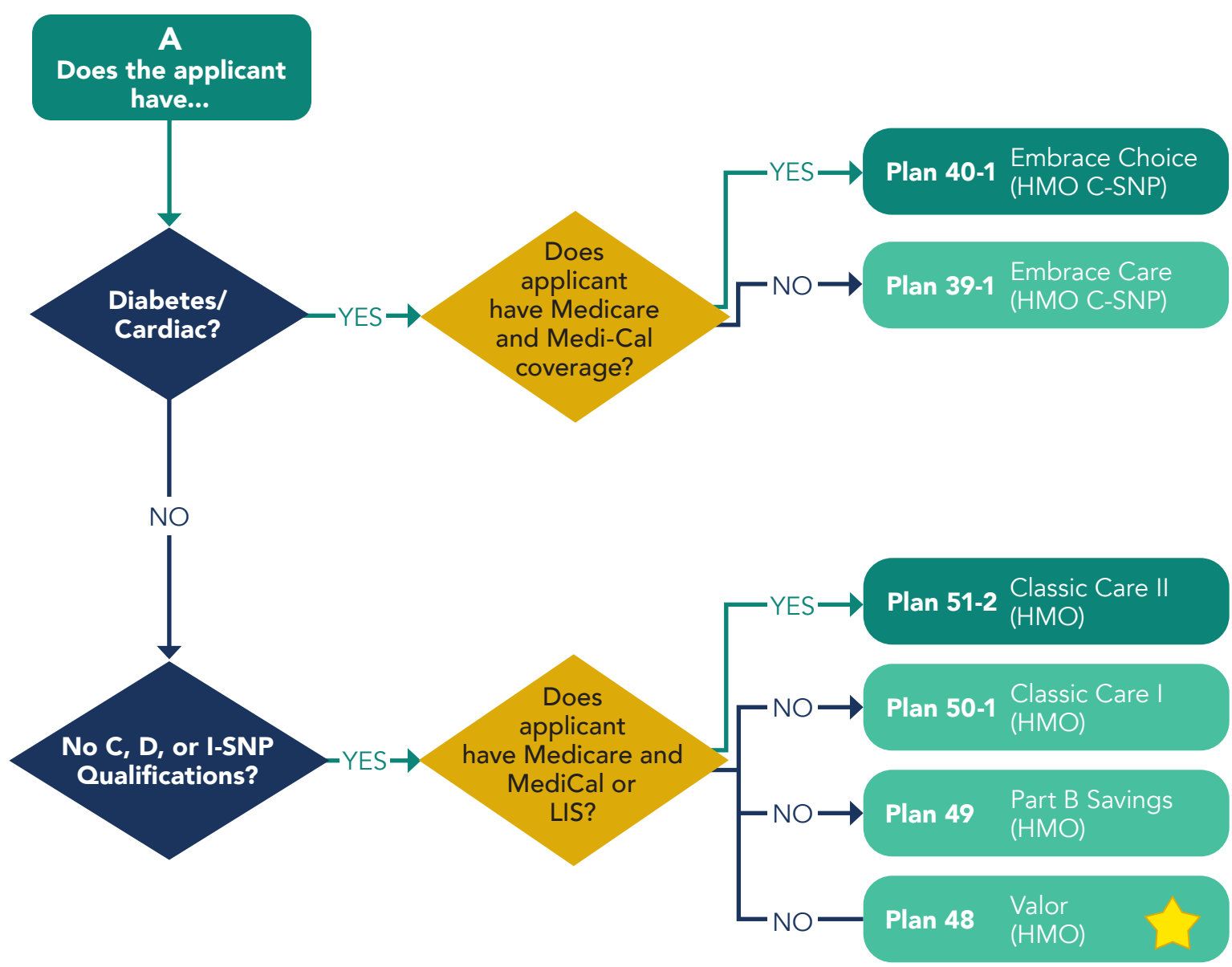
If you have any questions, please call Brand New Day at 1-866-255-4795
Intended for Agent use only, not to be distributed to Medicare beneficiaries

Plan Flow Chart for Plan Year 2024



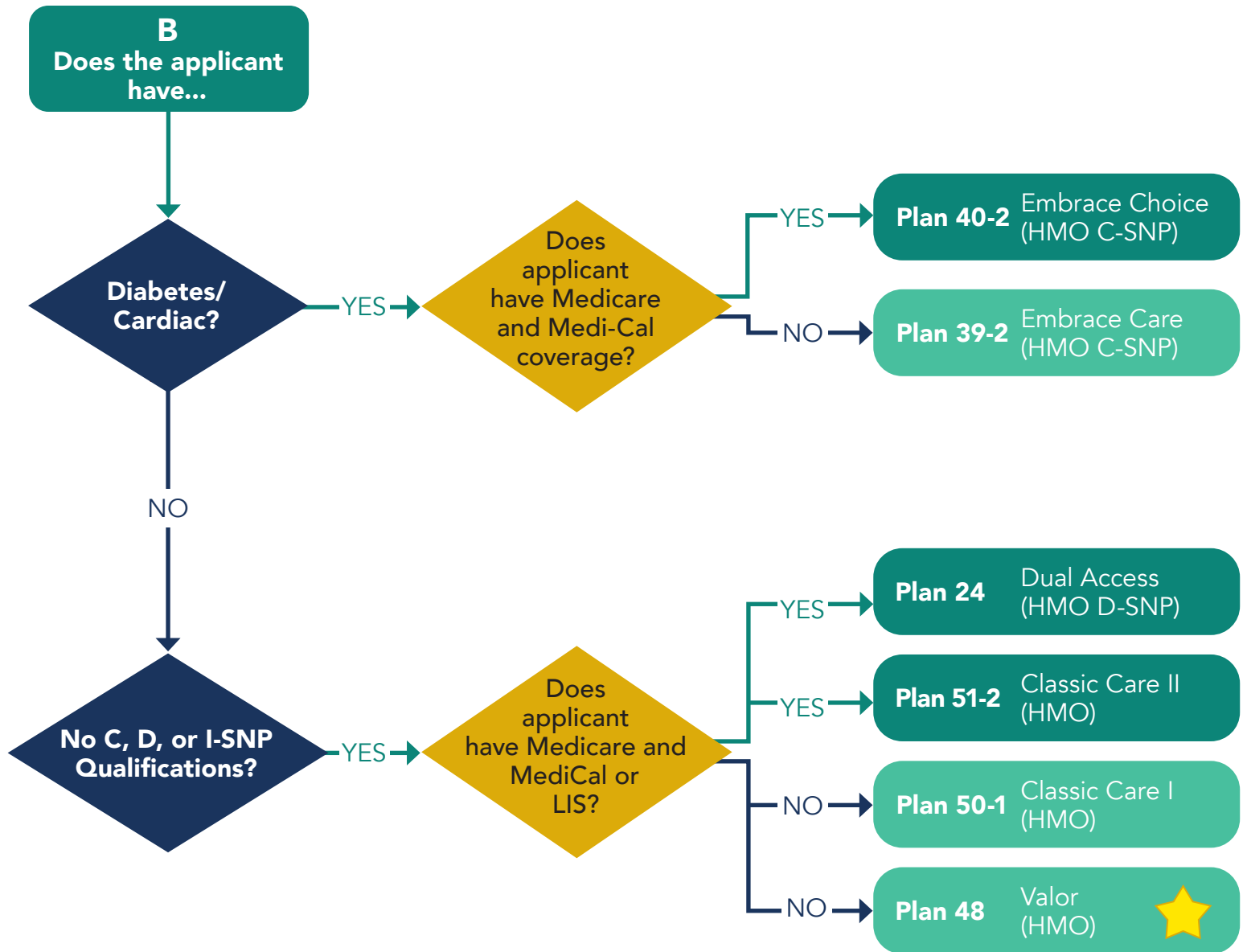
Member Resides in:
Los Angeles, Orange County, Riverside,
or San Bernardino Counties, San Diego

2024 Plan Flow Chart



Recommended for Veterans

2024 Plan Flow Chart



Recommended for Veterans



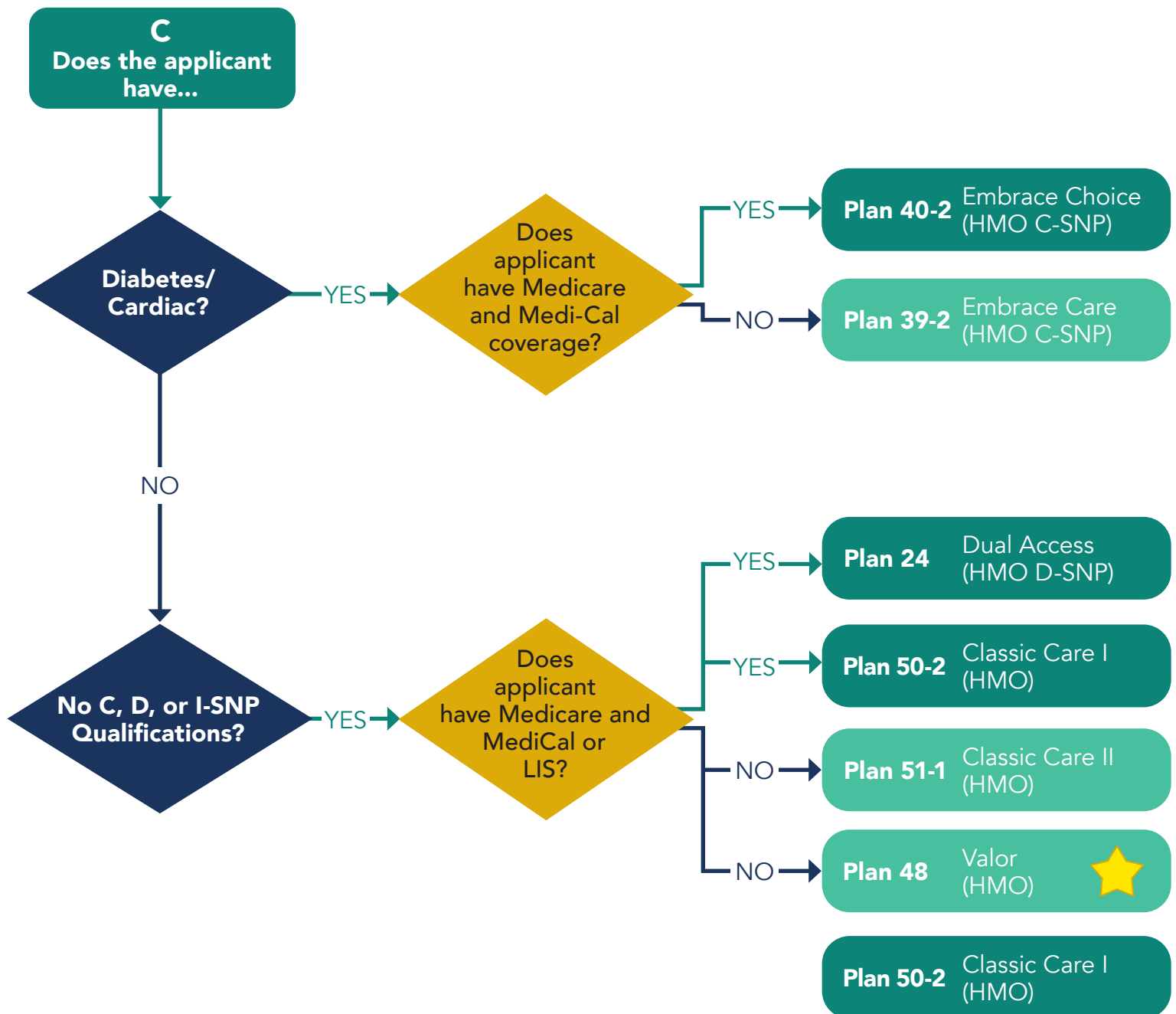


Member Resides in:
Imperial, San Francisco,
San Joaquin, or Tulare Counties?

brand new day

HEALTHCARE YOU CAN FEEL GOOD ABOUT

2024 Plan Flow Chart

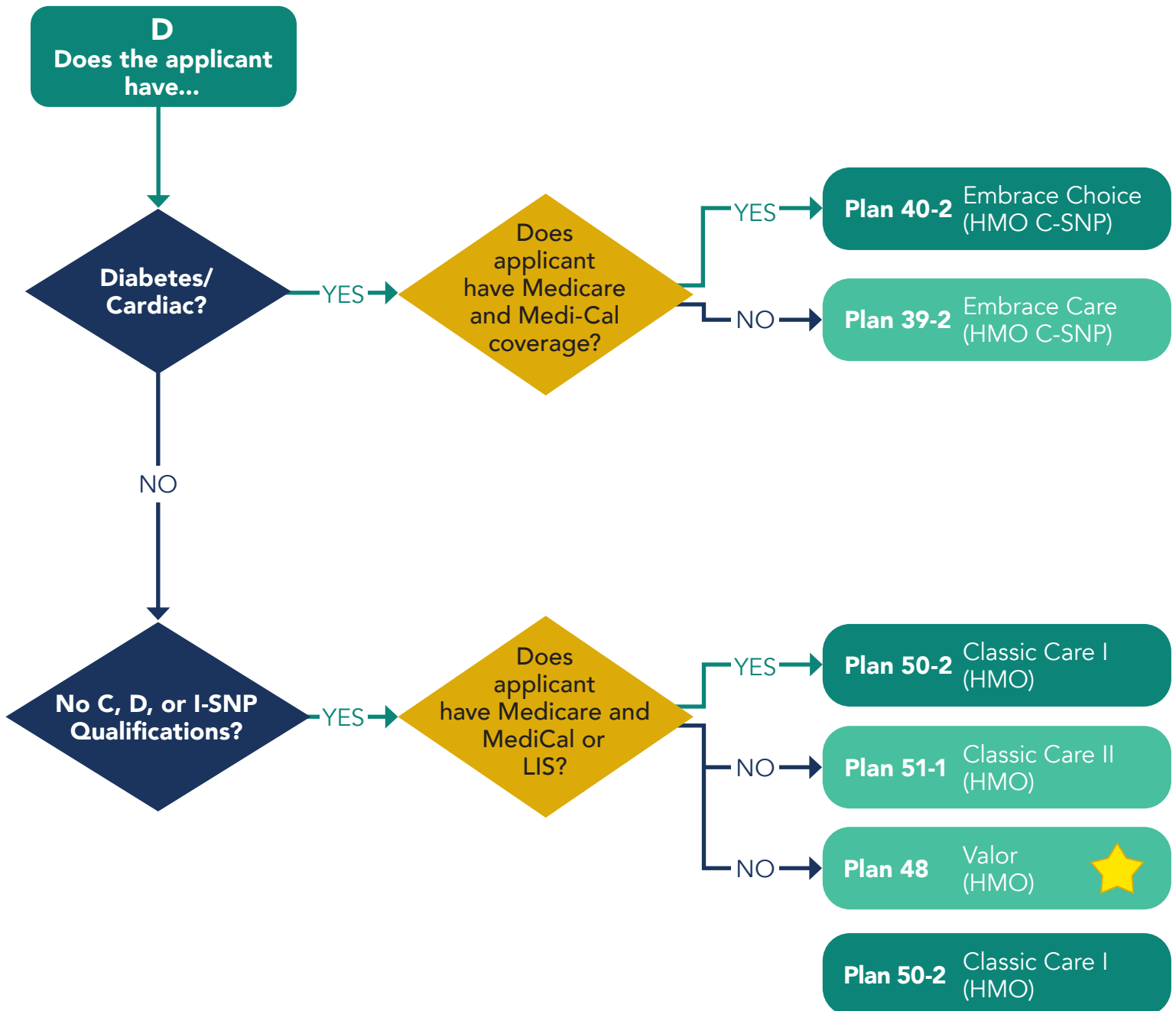


50-2 is an MAPD plan which can be purchased for a monthly premium of \$37.60. The monthly premium will be zero if the Medicare Beneficiary has LIS, extra help paying for their prescription drugs.



Recommended for Veterans

2024 Plan Flow Chart



50-2 is an MAPD plan which can be purchased for a monthly premium of \$37.60. The monthly premium will be zero if the Medicare Beneficiary has LIS, extra help paying for their prescription drugs.

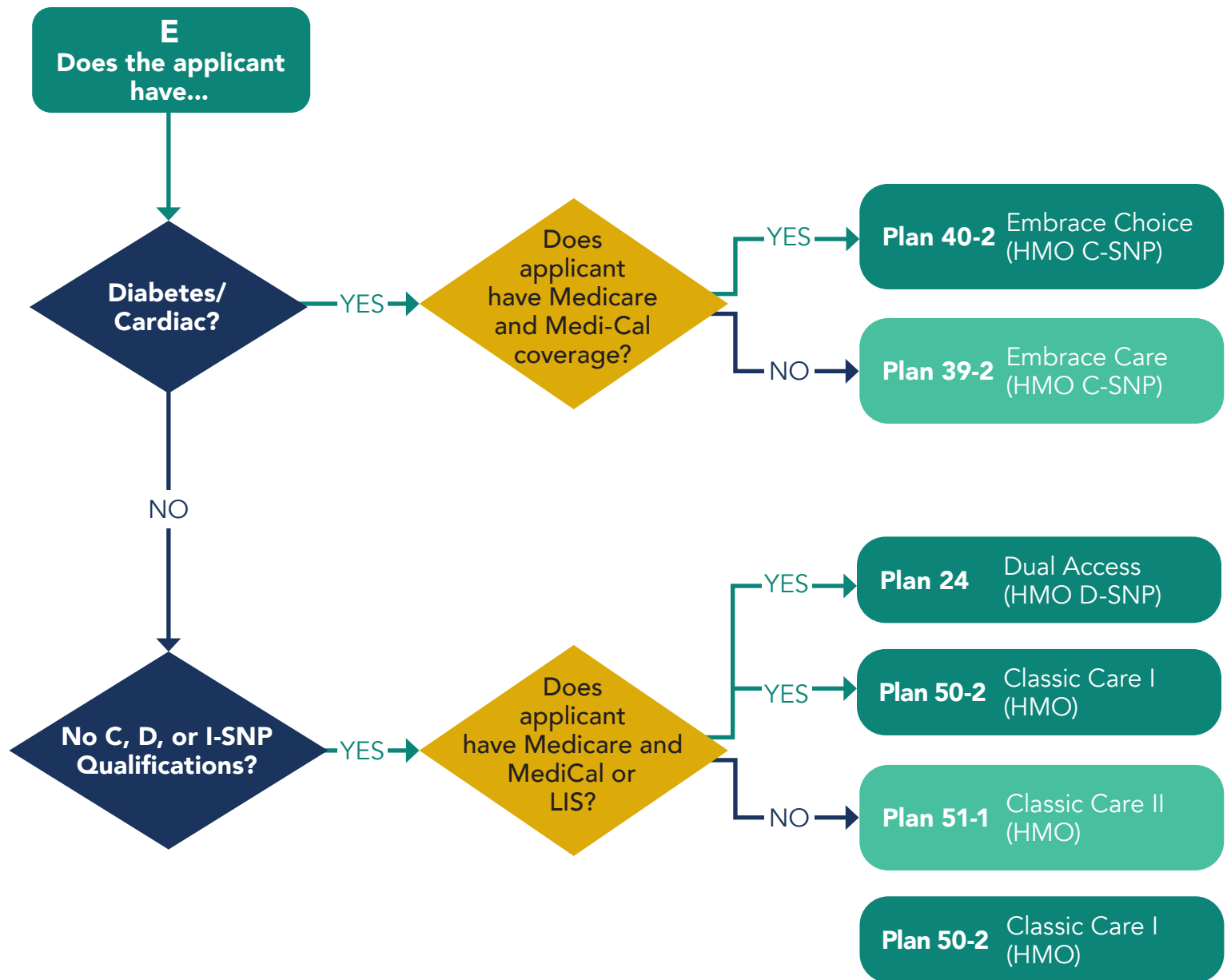
Recommended for Veterans





Member Resides in:
Alameda, Placer, Stanislaus,
or Yolo Counties

2024 Plan Flow Chart



50-2 is an MAPD plan which can be purchased for a monthly premium of \$37.60. The monthly premium will be zero if the Medicare Beneficiary has LIS, extra help paying for their prescription drugs.

2024 Plan Flow Chart

